

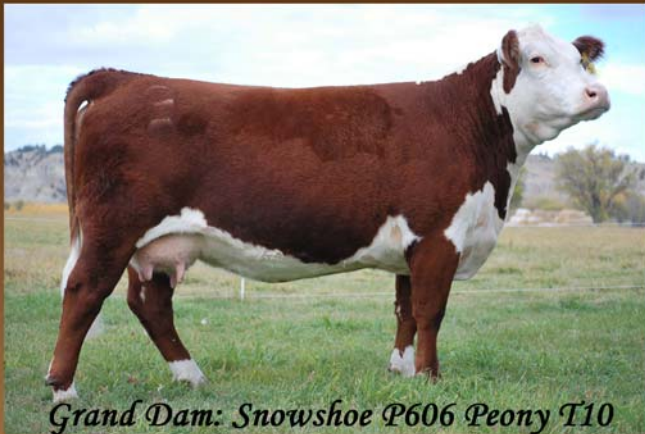


Dam: Snowshoe 719T Katie T10 Y27



Reserve Owned Cow-Calf at the 2015 JNHE with Bannack at side.

Bannack combines six highly maternal generations bred in our program with an industry trait leader for CE, Growth, & Carcass. This young sire offers low BW with a genuine growth spread. He is a true complete package that can advance the Hereford breed!



Grand Dam: Snowshoe P606 Peony T10

snowshoecattle.com